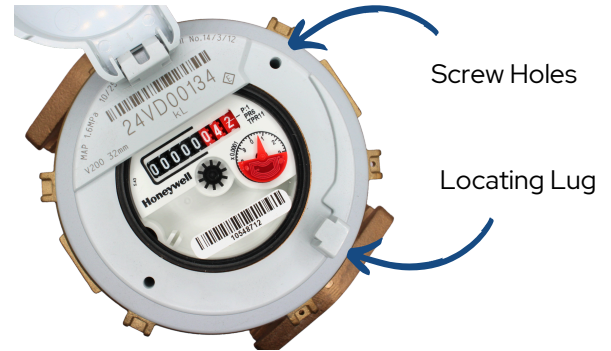


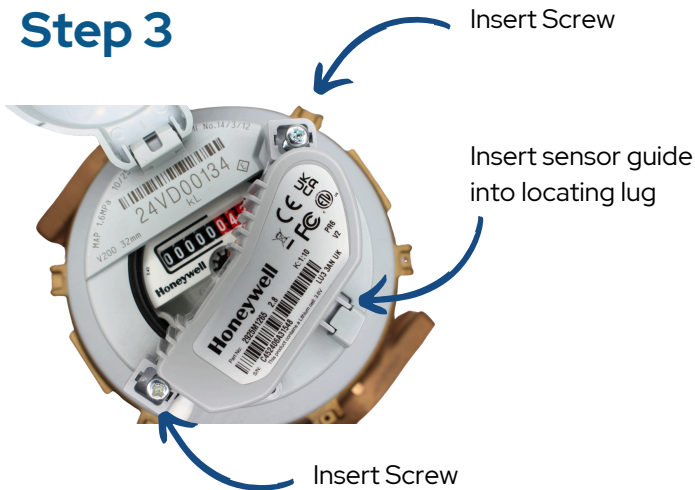
Step 1



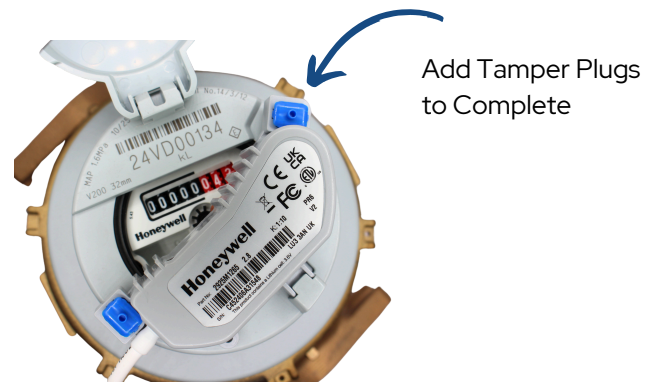
Step 2



Step 3



Step 4



Connection table

Self power types (2925M1221, 2925M1222 and 2925M1224)					
Primary output		Secondary output		Others	
Yellow	White	Red	Green	Brown	Black
All pulses	D.flag	Compensated pulses	C.flag	Tamper	Common



PR6 / PR7 Wiring Guide

Follow the link to the complete wiring guide.